

skpeel™

(Patented Compounded 5Fu, sal acid)

SEBORRHEIC KERATOSIS INSTRUCTION SHEET

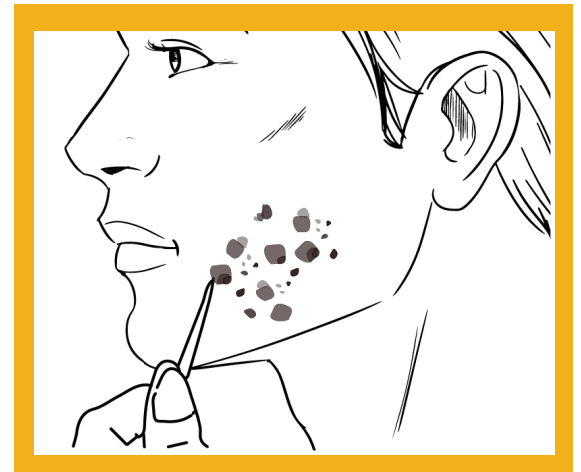
STEP 1:

Apply at bedtime. Remove tip cap and apply a small amount of WartPEEL® directly onto the plastic applicator (or a toothpick). Use forward and backward pressure on the plunger to regulate the amount of medication that comes out of the tip of the syringe. Replace tip cap to prevent the medication from drying out.



STEP 2:

Use the plastic applicator to apply a thin and even film directly over the seborrheic keratosis. Be careful not to get the medication onto the good skin as this may lead to irritation with repeated applications. Allow the medication to dry. This takes several minutes (10-20 minutes). The drying process can be sped up by using a hair dryer on the cool setting or a fan. Do not use any tape to cover the WartPEEL (even if it came with our prescription).



STEP 3:

Wash hands after applying the medication. Never put WartPEEL into the mouth, eyes, or nose.

STEP 4:

In the morning, wash the area to remove excess medication. The area can be left uncovered during the day or a covering such as a band aid may be used. Twice daily application should only be done if recommended by your doctor.

STEP 5:

Repeat steps 1-4, applying and removing the medication once daily or as directed.

Have other questions about WartPEEL? Follow these links to our YouTube channel to view our informative videos. (Videos are patient friendly but were originally produced for healthcare providers.)

Seborrheic Keratosis: <https://www.youtube.com/watch?v=6ozlhC52GwM&t=7sWartPEEL>

Keys to Success: <https://www.youtube.com/watch?v=s1L8l8eHDDo>

Knowing When to Stop: <https://www.youtube.com/watch?v=Y2YgV3XY37E>

General Information: <https://www.youtube.com/watch?v=ANSNgjeINLk>